

The Villages  
Golf & Country Club  
**EVERGREEN INVITATIONAL**  
**XLVII**



July 14th - 16th, 2016  
**PROGRAM AND SPONSORS**

# 2016, 47<sup>TH</sup> EVERGREEN INVITATIONAL

The Villages Men's Golf Club and the Evergreen Invitational Golf Committee extend our appreciation and thanks to all of the golfers, sponsors, organizations and volunteers that contributed to the success of the 2016 Evergreen Invitational golf tournament.

**The golfers** whose participation is the foundation for a successful tournament – we sincerely hope that your experience was enjoyable and memorable and we look forward to seeing you all next year.

**The sponsors** for their generous contributions and their much appreciated support for the Evergreen Invitational.

**The golf course maintenance staff** led by Mike Scully, BrightView Superintendant, for the superb condition of the golf course during the tournament and throughout the year.

**The Pro Shop staff** led by Scott Steele, Interim Head Golf Professional for their excellent preparations and hard work during the tournament.

**The clubhouse and restaurant staff** led by John Yu, for the excellent food, beverages and service throughout the tournament.

**The many volunteers** without whose assistance the distribution of tee prizes, management of on course events such as the Horserace, Putting, Skins, Low Gross and Strong Drive Competitions, distribution of On-Course Beverages, On-Course Sponsor Signage and Advertizing, Banquet Food and Wine, On-Course Lunches, and Door Prizes would have been impossible.

**The Evergreen Committee** who dedicated their time and energy to make the Evergreen Invitational so successful and memorable.

***Thank you one and all for your valuable contributions to the success of the 2016, 47th Evergreen Invitational Golf Tournament.***

***View photos for the 2016 Evergreen Invitational Tournament***  
**[www.evergreen16.shutterfly.com](http://www.evergreen16.shutterfly.com)**

**Gary Chappell**



General Chairman  
The Villages Men's Golf Club

**Hal Hallock**



Chairman  
2016 Evergreen Invitational

# 2016, 47<sup>TH</sup> EVERGREEN INVITATIONAL

The Evergreen Invitational appreciates the generous support of our sponsors. Your patronage of these sponsors is appreciated.

## **PLATINUM \$2,500**

Berna Sanayei, DDS  
BrightView Landscape/ Golf Course Maintenance

## **GOLD \$1,000**

AHA Auxilio-HomeAide  
Alain Pinel Realtors/David & Vicki Harris  
Ameriprise Financial  
Duffina Family Construction  
The Villages Realty Team/Suzanne & David Tofte  
The William Jefferies Co/Lisa & Geoff Gault

## **SILVER \$500**

Hahn's Electrical  
Hinman's Evergreen Garage  
Skip's Tire & Auto Centers  
Hays Companies  
Plaza Dental Group  
Western States Roofing Contractors Association

## **BRONZE \$250**

Alvco Plumbing  
California Graphics  
China Delight  
DGDG.com  
Arbor Dental Group  
Chambers Chiropractic  
Commonwealth Credit Union  
EQ1 Evergreen Estates/Doreen Pranschke  
Evergreen Veterinary Clinic  
Express Printing & Marketing  
Hearwell Audiology  
Lexus of Stevens Creek  
Renaissance Stone  
State Farm - Bob Fillhouer  
The Hearing Center  
Valley Heating and Cooling

## **SUPPORTING \$100**

Bobby Builder  
Mark's Floors  
Ted/Villages Repairman  
Jabez Realty  
New Seasons

## **HOLE IN ONE**


AJ Golf Car Center  
Stevens Creek BMW (3 prizes)  
Villages Pro Shop  
Yamaha Golf Cars of California



PLATINUM SPONSOR - \$2500 LEVEL

BrightView  
is proud to support  
The Villages  
Men's Golf Club  
2016 Evergreen  
Invitational

*From your friends at*

**BrightView** 

Landscape Maintenance • Golf Course Maintenance  
Tree Care • Irrigation & Water Management  
Landscape Design & Construction

[www.brightview.com](http://www.brightview.com)



## PLATINUM SPONSOR - \$2500 LEVEL

### **In House Dental Plan**

*No dental insurance?*

*We can help!!*

You simply pay one annual fee that covers you, your family,  
or your employees.

**Our In-House Dental Plan is included at no-charge:**

- 2 periodic exams per year
- Adult/child cleaning - 2 per year
- 1 Fluoride treatment per year - until age 14
- X-rays
- All emergency exams and x-rays

**All other services are given a 20% to 30% discount**

To learn more about Dr. Sanayei's In house Dental Plan,  
please call us or stop by at our office.

We are located next to Bank of America just outside of the gate.

**Berna Sanayei DDS**

2929 The Villages Pkwy

San Jose CA, 95135

**(408)274-9554**

## **GOLD SPONSOR - \$1000 LEVEL**



### **DAVID & VICKI HARRIS THE HARRIS TEAM**

**Selection of the Right REALTOR  
Can Lower Your Handicap !**



2921 Villages Parkway

San Jose, CA 95135

Vicki and David Harris

**(408)754-1572**

#01167363 / #01908982

[www.vickiharrisrealtor.com](http://www.vickiharrisrealtor.com)

[www.davidharrisrealtor.com](http://www.davidharrisrealtor.com)

## **HOLE IN ONE PRIZES**

### **Par 3's**

**Hole #6 – Minimum 180 yards**

**BMW X1**

(Courtesy of Stevens Creek BMW)

**Hole #11 – Minimum 135 yards**

**Yamaha Golf Cars**

(Courtesy of Yamaha Golf Cars of  
California)

**Hole #4 – Minimum 150 yards**

**EZGO Golf Car**

(Courtesy of AJ Golf Car Center)

## GOLD SPONSOR - \$1000 LEVEL



Your Satisfaction is our priority

License # 957041

Kitchen / Bath Remodels

Finish Work / Flooring

Doors and Windows

Stucco Repairs

Dry Rot Repairs

Outdoor Carpet removal

Carpet Glue Removal

Decks / Trellis

(408) 724-0482

**Duffina Family Construction**

**Proud Gold Sponsor**

**of the 2016 Evergreen Invitational**





# GOLD SPONSOR - \$1000 LEVEL

**George Papadoyannis**



**Choose him for the same reasons we did.**

Ameriprise Financial is proud to recognize George Papadoyannis as a Private Wealth Advisor. Fewer than 3% of our more than 10,000 advisors qualify for this distinct honor. Mr. Papadoyannis achieved this status as a result of his demonstrated excellence in service, industry knowledge and experience in meeting the complex financial needs of affluent clients. To see how George can help you, contact him at (650) 593-9170 ext. 328 or visit [www.papadoyannisandassociates.com](http://www.papadoyannisandassociates.com)

## **George Papadoyannis, CFP®, MBA**

Private Wealth Advisor

1900 O'Farrell St., Suite 360 | San Mateo, CA 94403 | Ph: (650) 593-9170 ext. 328  
1 Almaden Blvd., Suite 810 | San Jose, CA 95113 | Ph: (408) 918-5300



CA Insurance #: O812551

### **Papadoyannis & Associates**

A private wealth advisory practice of  
Ameriprise Financial Services, Inc.

**We are proud to sponsor  
the 47th Annual Evergreen  
Invitational Tournament**

George was rated #72 by Barron's Magazine in the top 1000 Financial Advisors in the February 2010 issue.

Brokerage investment and financial advisory services are made available through Ameriprise Financial Services, Inc. Member FINRA and SIPC. Some products and services may not be available in all jurisdictions or to all clients.  
© 2012 Ameriprise Financial, Inc., All rights reserved.



# GOLD SPONSOR - \$1000 LEVEL



*The William Jefferies co*

**Selling Villages Real Estate**

*Over 30 years experience buying, selling and property management in the Bay Area and the Villages*

Lisa Gault (408) 202-1959 gaultlisa@gmail.com

Geoffrey Gault (408) 202-2089 gwgault@gmail.com

**[www.FindHomesAndLoans.net](http://www.FindHomesAndLoans.net)**



BRE #01194339, 01129916

**Free** sale preparation and staging to make your selling experience more profitable and stress free.

*Free Property/Market Analysis and Real Estate advise- Always*



# GOLD SPONSOR - \$1000 LEVEL

*We are prepared to help you with everything from the every day to the extreme.*

Guided by our traditional values, we go beyond and set extraordinary goals...



...BY TRULY  
TAILORING TO  
YOUR NEEDS.



IN THE COMFORT  
OF YOUR HOME...

...we organize and streamline your likes, wants and needs to give back your most valued commodity—Time.

## AHA Auxilio-HomeAide

*"When You Can't, Together We Can"*



IN HOME  
HOURLY OR  
LIVE-IN HOME  
CARE...  
PERSONAL  
CONCIERGE  
SERVICES...  
& HOME CARE  
MEDICAL  
PRODUCTS...

[ahaindeed.com](http://ahaindeed.com)

- ◆ Home Care Services includes but are not limited to medication reminder, meal preparation, companionship, specialty care such as Alzheimer's and Dementia and Parkinson Disease.
- ◆ You are passionate about staying healthier and being active, we are passionate about your independence where you feel safe and supported.
- ◆ In addition to Home Care, we also provide Home Medical Product Services to streamline our services.



Contact  
us

**408-489-9674 or email us at [canans@ahaindeed.com](mailto:canans@ahaindeed.com)**

## The Earle Jenner Evergreen Invitational Horse Race

In honor and memory of Earle Jenner, who dedicated himself to the success of many functions of the Evergreen Invitational over the past couple of decades, but particularly to making the Horse Race a well organized, fun and flourishing event, the Evergreen Invitational Committee unanimously agreed to continue honoring Earle with ***"The Earle Jenner Evergreen Invitational Horse Race"***.



# GOLD SPONSOR - \$1000 LEVEL

*"Country Club Living at the Villages"*



**"We're your resident neighbors ready to help YOU with real estate."**

**Suzanne & Dave Tofte**

Direct: 408.315.6084 Direct: 408.472.1436

## *The Villages* Realty Team

SERVING THE VILLAGES SINCE 1985

**Leaders in Villages Real Estate Sales.**

**We make it happen!**

**Ask about our free staging program.**

### **(408) 270-4400**

2925 The Villages Parkway, San Jose, CA 95135

(2 doors down from Bank of America)

Email us at [dtofte@kw.com](mailto:dtofte@kw.com) or [stofte@kw.com](mailto:stofte@kw.com)

Visit our website at [www.TheVillagesRealtyTeam.com](http://www.TheVillagesRealtyTeam.com)

**Villages Property Management Team, Inc.**

Leasing and property management services

IRE#00716638  
BRE#00864784



# SILVER SPONSOR - \$500 LEVEL



## Large-Scale Community Association Risk Management Specialists

For more information please contact:

Hays Companies of Oregon  
5285 SW Meadows Road Suite 451  
Lake Oswego, OR 97035  
Phone: 503-624-4750  
Fax: 503-624-4751  
Contact name: Randy Hughes



# SILVER SPONSOR - \$500 LEVEL



**10% OFF AUTO SERVICE**  
**10% OFF REGULAR PRICED TIRES**

Valid only at:  
Skip's Tires & Auto Centers  
3002 Silver Creek Rd., San Jose, CA 95121  
(408) 270 4911



Serving the Villages since 1986!

**Douglas W Vierra, DDS & Associates**

**4205 San Felipe Road, Suite 200**

**(408) 270-4333**

**www.plazadental.com**

**Let us see your smile!**

**Check Villages Directory for special offer.**



## SILVER SPONSOR - \$500 LEVEL



### **WESTERN STATES** ROOFING CONTRACTORS ASSOCIATION

Serving the Western Roofing & Waterproofing Industry Since 1974

275 Tennant Avenue, Suite #106  
Morgan Hill, CA 95037

Toll Free: 1 (800) 725-0333

Phone: (650) 938-5441

Fax: (650) 938-5407

Email: [info@wsrca.com](mailto:info@wsrca.com)

*Hinman's Evergreen  
Garage, Inc.*

***Complete Automotive Service***

**Mike**

**(408) 274-0879**

**[www.hinmansgarage.com](http://www.hinmansgarage.com)**

**[hinmansgarage@aol.com](mailto:hinmansgarage@aol.com)**

**3519 San Felipe Road, San Jose CA 95135**

## SILVER SPONSOR - \$500 LEVEL



Hahn's Electrical  
Harness Your Energy Costs  
with LED Technology

Ken McDougall  
408-639-1972 cell  
PO Box 967  
Morgan Hill CA 95038  
408-295-1755 office

[ken@hahnslighting.com](mailto:ken@hahnslighting.com)  
[www.hahnselectrical.com](http://www.hahnselectrical.com)

## 2016 EVERGREEN COMMITTEE



# XLVII 2016 EVERGREEN INVITATIONAL

## AWARDS DINNER PROGRAM

### SATURDAY JULY 16, 2016

Presented by the Villages Men's Golf Club

6:00 PM      No host cocktails

7:00 PM      Dinner

7:45 PM      Welcome and Introduction of the Men's Club Executive Committee by  
Gary Chappell, General Chairman

Introduction of the Evergreen Invitational Committee Members by  
Hal Hallock, Chairman - 2016 Evergreen Invitational

Sponsor Recognition by Rick Jiloty  
Sponsor Chairman - 2016 Evergreen Invitational

Awards Presentations by Scott Steele, Interim Head PGA Golf Professional  
for Top 3 winners in each flight, overall Evergreen Champions

Door Prizes by Geoff Gault

Closing Statements by Hal Hallock

*Thank you for attending the  
47th Evergreen Invitational  
Awards Banquet*





# HOLE-IN-ONE SPONSORS



A J Golf Car Center - Hole #4: EZGO Golf Car

# AJ

**Golf  
Car  
Center**



**New & Used Golf Cars**  
**Sales • Parts • Service**  
*Since 1981*

**David Vachon, Owner**  
**(408) 274-7742**  
**2981 S. King Road**  
**San Jose, CA 95122**

Yamaha Golf Cars of California - Hole #11 – Yamaha Golf Car

## Yamaha Golf Cars of California

With locations in Northern and Southern

California to serve you

5717 Brisa Street  
Livermore, CA 94550  
Tel: 925-371-5350  
Fax: 925-371-5354



# YAMAHA

315 East Ball Road  
Anaheim, CA 92805  
Tel: 714-776-9808  
Fax: 714-776-9804

**Sales, Service, Parts, Rentals**

# 2016 TEE PRIZE



## BRONZE SPONSOR - \$250 LEVEL



### Bob Fillhouer

Agent

2899 The Villages Parkway  
San Jose, CA 95135  
Bus 408 558 7771 Fax 408 559 7779  
bob@myagentbob.com



Insurance License #0786250

*For Emergency Road Service, call 877-627-5757.*



**COMMONWEALTH**  
CENTRAL CREDIT UNION

(800) 564-1588 | [www.wealthcu.org](http://www.wealthcu.org)

# \$50

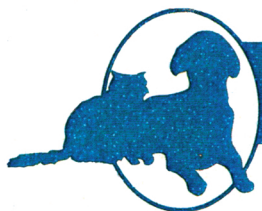
says  
you'll  
love  
us!

Visit our Silver Creek branch,  
located at 5890 Silver Creek Valley Rd,  
mention this ad and receive \$50\*  
when you open a checking account!

\*\$50 will be deposited into checking account at the time of account opening. Membership in Commonwealth required and is available to almost anyone. All new accounts will be verified by Chex Systems. Cash or non-cash gifts in excess of \$10 are subject to IRS reporting on form 1099-INT. Offer is subject to cancellation without notice and cannot be combined with any other offer. Offer expires December 31, 2016.

Federally insured by NCUA.

# BRONZE SPONSOR - \$250 LEVEL



***E*vergreen**  
*veterinary clinic*

408 238-0690

1611 east capitol expy.  
san jose, ca 95121

m - fri. 7:00 am - 7:30 pm

sat. 8:00 am - 6:00 pm

sun. 10:00 am - 4:00 pm



**LAWRENCE D. CHAMBERS, D.C.**

(408) 270-8795

GOLDEN HILLS PROFESSIONAL CENTER  
2670 S. WHITE RD., SUITE 160      SAN JOSE, CA 95148

**LEXUS**   
A PENSKE COMPANY **STEVENS CREEK**

Lexus of Stevens Creek is Proud to  
Support the 47th Evergreen  
Invitational Golf Tournament



## **Joe Hart**

Fleet Manager/Costco, AAA, Cr. U

Cell (408) 799-5556 • Direct (408) 553-4557

joe.hart@lexusofstevenscreek.com

***"Your Verano Village Neighbor!"***



## BRONZE SPONSOR - \$250 LEVEL

### THE HEARING CENTER

*Hear Better, Live Better*

**San Jose** • 6140 Camino Verde Dr, Ste I

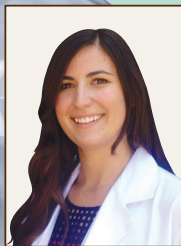
**408.600.0018**

**Morgan Hill** • 17600 Monterey Rd, Ste B  
(Tower Office Building)

**408.465.4561**



**Joseph R. Ferrito, Au.D.**  
Doctor of Audiology



**Sarah Lindberg, Au.D.**  
Doctor of Audiology

[www.TheHearingCenter-CA.com](http://www.TheHearingCenter-CA.com)  AudigyCertified™

# China Delight



**Restaurant**  
**CHINESE CUISINE**

**Open 7 Days A Week**

**MONDAY-FRIDAY**

Lunch 11:00am - 2:30pm

Dinner 4:30pm - 9:00pm

**SATURDAY - SUNDAY**

11:30am - 9:00pm

3245 S. White Road

San Jose, CA 95148

Tel: (408) 270-8350 \* Fax: (408) 2708313

2596 Homestead Road \* Santa Clara, CA 95051

The newest technology, the most efficient  
equipment and competitive pricing  
- all delivered with Old-Fashioned Service.

Locally and family owned since 1962.



LIC# 258540

## Valley Heating, Cooling, Electrical

[valleyheating.com](http://valleyheating.com) ~ 1171 N. 4th St., San Jose



**Ask about our Villager discounts! 408.294.6290**

# BRONZE SPONSOR - \$250 LEVEL

**Sales and Design Center**  
8881 Muraoka Drive, Suite 2  
Gilroy, CA 95020

*(By appointment only)*



A Professional Graphics & Design Company  
a division of Sign Creations

**Mailing address:**  
305 Vineyard Tn Center  
#398  
Morgan Hill, CA 95037

**Ken Clarkson, Owner**

CA Contractors License #905524

**(408) 778-3030 Direct**

**(408) 300-1445 Fax**

**Email: [signs@garlic.com](mailto:signs@garlic.com)**

Signage for every need..... Hospital/  
School/Architectural, Engraving, ADA,  
Dimensional, Sandblasted, Decals,  
Monument, Digital Print, Development/Lot,  
Vehicle, Banners **and more.....just ask!**

**HEARWELL AUDIOLOGY, INC.**

Hearing well is living well.



**408-356-1999**

5406 Thornwood Drive, San Jose, CA • 465 Saratoga Ave, San Jose, CA  
14911 National Avenue, Los Gatos, CA • 511 3rd Stree West, Sonoma, CA



# BRONZE SPONSOR - \$250 LEVEL

Slate - Marble - Travertine - Limestone - Granite



## RENAISSANCE STONE CARE & WATERPROOFING

*Fully Licensed and locally owned,  
we earn our reputation one satisfied customer at a time.*

### Stone Care

- Restoration & Preservation
- Scratch & Stain Removal
- Lippage Removal
- Sealing
- Caulking & Sealants
- Color Enhancer

Customers who choose Renaissance Stone Care

& Waterproofing can be confident their property will receive the best and most appropriate waterproofing products available, and that they will be applied by professionally trained applicators who adhere to the industry's highest standards.

### Waterproofing

- Below Grade
- Walls
- Decks
- Garden Roofs
- Shower Pans
- Vapor Barriers



408-998-4700

415-775-3211

[www.rscwp.com](http://www.rscwp.com)

Program & Sponsors Booklet Printed By:



**EXPRESS**  
**PRINTING & MARKETING**  
*powered by Global Graphics Network*

Printing • Copying • Advertising Specialty Items • Mailing Services • Digital Color Digital Printing •  
Websites • Mobile Marketing • Cross Media Marketing

(408) 400-0223 • [www.expressprintingusa.com](http://www.expressprintingusa.com)



Mike Bui  
Agent/President  
BRE#01804689

2901 The Villages Parkway San Jose CA 95135

Office: 408-270-5555  
Cell Doreen: 408-859-6114  
Email Doreen:  
[homes@doreenpranschke.com](mailto:homes@doreenpranschke.com)  
Cell Mike: 408-807-0792  
Email Mike: [mike@eq1re.com](mailto:mike@eq1re.com)



Doreen Pranschke  
Associate Broker-  
BRE#01216125



## BRONZE SPONSOR - \$250 LEVEL



Mark Ajlouni, D.D.S.

Arbor Dental Group  
3151 S White Rd., Suite 104  
San Jose, CA 95148  
Phone: (408) 270-2273  
Fax: (408) 270-2336  
Email: arbordds@aol.com

General & Cosmetic Dentistry

# BE HAPPY

# DGDG.COM

## DEL GRANDE DEALER GROUP

# PLUMBING

"SERVING THE VILLAGES  
FOR OVER 20 YEARS"



CSLB #B585720, C-36

FREE ESTIMATES **408.279.5531**

SENIOR DISCOUNT

RUNNING TOILETS•SLOW DRAINS•NOISY DISPOSALS  
LEAKING FAUCETS•WATER HEATERS•GAS PIPING  
ADA-COMPLIANT WALK-IN TUBS AND SHOWERS  
BATHROOM AND KITCHEN REPAIR•REMODEL•RENEW

## **SUPPORTING SPONSOR - \$100 LEVEL**

**Mark's Floors | (408) 569-5046 | Mark Yauk**

---

**Bobby Builder | (408) 497-0746 | Bob Palmiotto**

---

**Jabez Realty/Jeanette Campa | (408) 661-0203**

---

**New Seasons | (408) 513-8200 | [www.newseasonsmarket.com](http://www.newseasonsmarket.com)**

---

**The Villages Repairman | (408) 828-8098 | Ted Pranschke**

---







# 2016, 47TH EVERGREEN INVITATIONAL

## *Door Prize Sponsors*

The Villages Men's Golf Club and the Evergreen Invitational committee extend our thanks to the door prize sponsors for their support of the tournament.

**Uptown Totes/Mary Wollesn** – Shoe Bag, Ditty Bag, Wine Tote  
(408) 528-8116

**Cinnabar Hills Golf Club** – Foursome's Green fees with Carts (M-Th)  
(408) 323-5200

**Caspian Village Restaurant** – Two Dinners  
(408) 528-8500

**AJ Golf Car Center** – Two Gift Certs for Service and Grease  
(408) 274-7742

**The Villages Restaurant** – Dinner for four Gift Cert  
(408) 754-1336

**New Seasons Market** – Two \$75 Gift Cards  
(408) 513-8200

**Villages Hair Gallery** – Two \$30 Gift Certs  
(408) 274-0100

**Anna Hewitt Real Estate** – Gift Basket  
(408) 206-2872



# 2016, 47TH EVERGREEN INVITATIONAL

## *Volunteers*

### **Par 3s – Par Three Events**

V. Jack Smith – Chairman  
David Baxter  
Ina Baxter  
Catherine Crandall  
Rose Gravelle  
Judy McAlister  
Sue Morreale  
Teddy Morse  
Bobbie Moyer  
Loretta Parker  
Nancy Reed  
Betty Sharps  
Lovina Smith  
Miep Sturru  
Barbara Travis

### **Putting Contest**

Gary Sharps – Chairman  
Kathy Kyne  
Betty Sharps  
Mio Shigemoto

### **Strong Drive Contest**

Jeff Buckingham – Chairman  
Diana Hallock  
Jessic McElvaney

### **Beverages**

Lou Christie – Chairman  
Jim Valenti  
Paul Espejo

### **Horse Race**

Dick Fisher - Chairman  
Vivian Brown  
Maggie Fisher - Check In  
Patti Hayes  
Sandie Jenner - Check In  
Chris Leisy  
Ken Peters - Parimutuel  
Lynn Peters - Parimutuel  
Lyn Strong

### **Registration**

Larry Peterson – Chairman  
Maggie Fisher  
Linda Peterson  
Geri Wilk

### **Skins/Low Gross**

Ray Struck – Chairman  
Susan Dooley  
Lyn Strong

### **Sponsor Signage**

Joe Urrutia – Chairman  
Ran Baldinger  
Nick Corsello  
Bob Lippert  
Larry Martinson  
Jack McCarthy  
Bob Wilk

### **Sponsors**

Rick Jiloty - Chairman  
Geoff Gault - Door Prizes & HIO  
Gary Chappell  
Hugh Fahrner  
Dick Fisher  
Chon Gallegos  
Ray Leisy  
Joel Levine  
Bob Lippert  
Tom Papas  
Ken Peters  
Larry Peterson  
Bob Robles

***The 2016 Evergreen Invitational Committee  
extends its sincere thanks and  
appreciation to all of these volunteers who  
gave their time and effort  
in support of the tournament.***

# THE VILLAGES GOLF & COUNTRY CLUB

## Men's Golf Club 2016 Executive Committee

Gary Chappell	General Chairman
Ray Struck	Vice Chairman
Larry Martinson	VGC Rep & Secretary
Bob Wilk	Treasurer & Hole In One Chairman
Ray Struck & Jeff Buckingham	Tournament Co-Chairmen
Hal Hallock	Evergreen Tournament Chairman
Jack McCarthy	Home & Home Chairman
Joel Levine	Publicity Chairman
David Gonzales	Membership/Handicap/NCGA

## 2016 Evergreen Invitational Committee Members

Hal Hallock	Chairman
Rick Jiloty	Sponsors
Brooks Fuller	Secretary
Bob Wilk	Treasurer
Larry Peterson	Registration
Bill Johnston	Tee Prizes
Jack Smith	Par Three Events
Joel Levine	Publicity
Julian Rodriguez/Terry Doland	Invitations
Dick Fisher/Ken Peters	Horse Race/Parimutuel
Jeff Buckingham	Strong Drive Contest
Lou Christie	Beverages
Gary Sharps	Putting Contest
Ray Struck	Skins Game/Low Gross
Joe Urrutia/Bob Wilk/Jack McCarthy	Sponsor Signage
Larry Dorsey	Course Setup
Nick Corsello	Meals/On-Course Food
Noel Lancot	Banquet and Setup
Ken Peters, George Olson, Gary Chappell	Data Management
Scott Steele	Interim Head Golf Professional
Mike Scully, BrightView	Course Superintendent